

2014 – 2015
TEHAMA COUNTY
GRAND JURY FINAL
REPORT



Table of Contents

Approval for Filing of the 2014-2015 Tehama County Grand Jury	
Final Reports by Superior Court Judge Matthew C. McGlynn	2
Submission of the 2014-2015 Tehama County Grand Jury	
To Presiding Superior Court Judge Matthew C. McGlynn	3
The Tehama County Grand Jury: an Overview	4
The Tehama County Grand Jury Foreperson Statement	6
Acknowledgements	7
2014-2015 Tehama County Grand Jury Members	8
2014-2015 Tehama County Grand Jury Committees and Members	9
2014-2015 Tehama County Grand Jury Agency Inquiries	
Tehama County Jail Inquiry	11
Tehama County Juvenile Hall	17
Tehama County Day Reporting Center	23
The State of Water Conservation in Tehama County	28
Past/Future Grand Jury Recommendations and Citizen Complaints	34
Responses to the Recommendations of the 2013-2014 Grand Jury	
Board of Supervisor’s Response	36
Tehama County Coroner’s Office	39
Tehama County Jail Inquiry	39
Campus Safety at Red Bluff Union High School	41
Public Administrator’s Office	43
Audit Summary	44
Summary of Agencies Visited by past Grand Juries	45

The 2014-2015 TEHAMA COUNTY GRAND JURY

Approved this FINAL REPORT

David Torgersrud

Foreperson, 2014-2015 Tehama County Grand Jury

I Accept for Filing the Final Report

Of the 2014-2015 Tehama County Grand Jury

Honorable Matthew C. McGlynn

Supervising Judge Of the 2014-2015 Tehama County Grand Jury

**2014-2015 Tehama County Grand Jury
County of Tehama
P.O. Box 1061
Red Bluff, CA 96080**

Honorable Matthew C.
McGlynn Judge of the
Superior Court Department 2
County of Tehama
P.O Box 248
Red Bluff, CA 96080

Dear Judge McGlynn:

In compliance with California Penal code 933, the 2014-2015 Tehama County Grand Jury submits its final report.

The 2014-2015 Tehama County Grand Jury Final Report includes reports on four individual inquiries made of local government departments. The members of the 2014-2015 Tehama County Grand Jury reviewed and voted on all the reports. All of the reports received affirmative votes by super majority for inclusion and publication in the 2014-2015 Tehama County Grand Jury Final Report.

We respectfully submit the 2014-2015 Tehama County Grand Jury Final Report for your review and approval for filing.

Sincerely,

Dave Torgersrud

Foreperson, 2014-2015 Tehama County Grand Jury

The Tehama County Grand Jury

The California Constitution mandates the establishment of a grand jury in each county. The functions of the grand jury are defined in the California Penal Code. The grand jury is administered by the Superior Court and is part of the judicial branch of the county government. Its functions are investigatory and fall into two basic categories, civil and criminal.

In its civil function, the grand jury investigates city and county governmental agencies, as well as special districts, examining procedures, methods and systems to ensure that the interests of the citizens of the county are being met effectively. Problems within these agencies may be noted, and solutions recommended, in the grand jury's reports. This is often referred to as serving in a civil "watchdog" capacity.

In its criminal function, the grand jury has a responsibility to inquire into possible public offenses and misconduct of public officers while in office. In addition, the grand jury may be called on to determine whether to return indictments charging the commission of felonies.

The Tehama County Grand Jury consists of 19 persons chosen from the citizens of the county. Individually, and as a group, they are expected to exercise diligence and sound judgment independent of other governmental agencies in carrying out their mandated responsibilities. Unlike most other counties, where the members of the grand jury are chosen from a list of applicants or volunteers, the members of the Tehama County Grand Jury are chosen from a randomly selected group of citizens as in a regular jury pool. This mode of selection provides a wide range of localities, ages, employment, and educational backgrounds among the members of the grand jury. This diversity not only brings a broad base of knowledge and experience to the group, but also brings an important variety of perspectives and insights into each of the situations investigated, strengthening the ability of the grand jury to assure that the needs of all the citizens of the county are being considered.

Inquiries into county agencies can be initiated within the grand jury itself, or can be initiated through complaints from the citizens of the county alleging misconduct or irregularities in the functions of the government. These complaints are acknowledged and considered by the grand jury to determine if an investigation is warranted. Some complaints are investigated independently. Others are included as part of a routine inquiry into the agency in question. Some are not acted upon by the grand jury because they are already being resolved through another venue, do not fall within the jurisdiction of the grand jury, or there is not sufficient time left to do a thorough investigation. In this last situation, the complaint is passed on to the next grand jury with a request that the members consider acting upon it.

Reports issued by the grand jury do not identify individuals interviewed. Penal Code Section 929 requires that reports of the grand jury not contain the name of any person, or facts leading to the identity of any person who provides information to the grand jury. The California State Legislature has stated that it intends the provisions of Penal Code Section 929 prohibiting disclosure of witness identities to encourage full candor in testimony in grand jury investigations by protecting the privacy and confidentiality of those who participate in any grand jury investigation.

The Presiding Judge, the District Attorney, the County Counsel and other county departments and agencies assist the grand jury in its responsibilities.

Foreperson's Statement

The 2014-2015 Tehama County Grand Jury has completed its responsibilities as charged by the Superior Court Supervising Judge of the 2014-2015 Grand Jury, the Honorable Matthew C. McGlynn. The activities of that grand jury as impaneled and sworn in on June 26, 2014 are detailed in the pages that follow.

The 2014-2015 Tehama County Grand Jury was selected at random after a questionnaire on background education, occupation, etc. was answered and returned to the Jury Commissioner.

The foreperson and foreperson pro tempore attended a one day training seminar put on by the California Grand Jurors' Association (CGJA) designed especially for jurors with leadership roles. A two day training seminar was held by the CGJA for the jurors. This seminar was beneficial in defining our responsibilities, providing guidance for organizing our team and laying out the sequence for proceeding with our activities during our tenure as a grand jury. We sent four people to a report writing seminar in November that provided a detailed process for documenting our work and writing our report. All of the seminars were informative. They were well organized, provided excellent workbooks for future reference and created a network of contacts with the CGJA for future questions.

During the 2014-2015 Grand Jury term jurors met in plenary (full jury) sessions monthly, and more often as needed. The Grand Jury met in the Tehama County Administrative Building. Committee meetings were held at various times, in various locations, as determined by the committee members. Additional committee meetings took place when visiting agencies, conducting tours, interviewing, collecting resource information and drafting reports. Our focus was to ensure we produced quality reports for the areas/agencies that we reviewed.

ACKNOWLEDGEMENTS

The 2014-2015 Tehama County Grand Jury would like to extend our sincere and appreciative thanks to several key people who supported us throughout the year.

We thank the Presiding Superior Court Judge Mathew C. McGlynn for his support and encouragement this year. He provided a clear sense of our responsibilities when we were impaneled and attended our first plenary meeting to answer questions, provide guidance and offer his support to us during the course of the year. We also thank County Counsel Arthur Wylene for his time in answering our questions and providing us with guidance when needed. He was always responsive and knowledgeable in the matters discussed.

We thank Diane Graham, the Court Services Coordinator for providing a great deal of information to assist us in organizing the Grand Jury. Diane left her position during the year and we also thank Carol Sharek, who replaced Diane, for her help in getting the combined final reports published and distributed.

We thank Kathy Lytle, an Administrative Secretary for Tehama County, for helping us coordinate all of our interactions with the county government.

In the process of completing our inquiries, we had the opportunity to meet with numerous community leaders, who were very helpful. They were professional, responsible, honest and informative. We were impressed with the caliber of people we worked with in all of our visits.

As the foreperson, I also want to thank every member of the 2014-2015 Grand Jury. I was impressed by the degree of civility, respect and focus demonstrated by all of the members of the Grand Jury over many hours of potentially contentious discussions. Their collective wisdom and intellect in writing and creating this report was valued and very appreciated. While no one volunteered for this duty, they accepted the responsibility that they were given and took pride in fulfilling their duties. Certain people took on a large share of the workload and I would like to thank them specifically. Mark Murphy was foreperson pro-tem and took on the task of assembling the combined final report. Leslie Adams, David Pryatel, and Susanna Waddell all took on the responsibility of chairing committees and I appreciate their support and leadership in creating quality reports. Jamie Brox accepted the role of secretary and did a great job with the minutes.

Tehama County has been served well by this entire committee.

2014 – 2015 Tehama County Grand Jury Members

1. Foreperson – Dave Torgersrud
2. Pro-Tem – Mark Murphy
3. Secretary – Jamie Brox
4. Sergeant at Arms – Beth Votaw
5. Leslie A. Adams
6. Clinton Baccala, III
7. Paula C. Cunningham
8. Leslee Denniston
9. Russell W. Doyle
10. Kimberly L. Hood
11. Steven N. Ledford
12. Brandy L. Lee
13. David A. Pryatel
14. Yvonne A. Ruiz
15. Matthew J. Sanchez
16. Charleen Anne Smith
17. Susanna Waddell
18. Robert S. Wierzbicki

2014-2015 Tehama County Committees

1. Foreperson – Dave Torgersrud
2. Pro-Tem – Mark Murphy
3. Secretary – Jamie Brox
4. Sergeant at Arms – Beth Votaw

Committees

Audit and Finance

Matt Sanchez, Chair

Members: Mark Murphy
Brandy Lee

Editorial

Mark Murphy, Chair

Members: Brandy Lee
Yvonne Ruiz
Dave Torgersrud

Education

Susanna Waddell, Chair

Members: Beth Votaw
Yvonne Ruiz
Robert Wierzbicki
Kim Hood
Leslee Denniston

Law Enforcement

Leslie Adams, Chair

Members: Charleen Smith
Jamie Brox
Matthew Sanchez

Public Works

David Pryatel, Chair

Members: Russell Doyle
Clint Baccala, III
Paula Cunningham

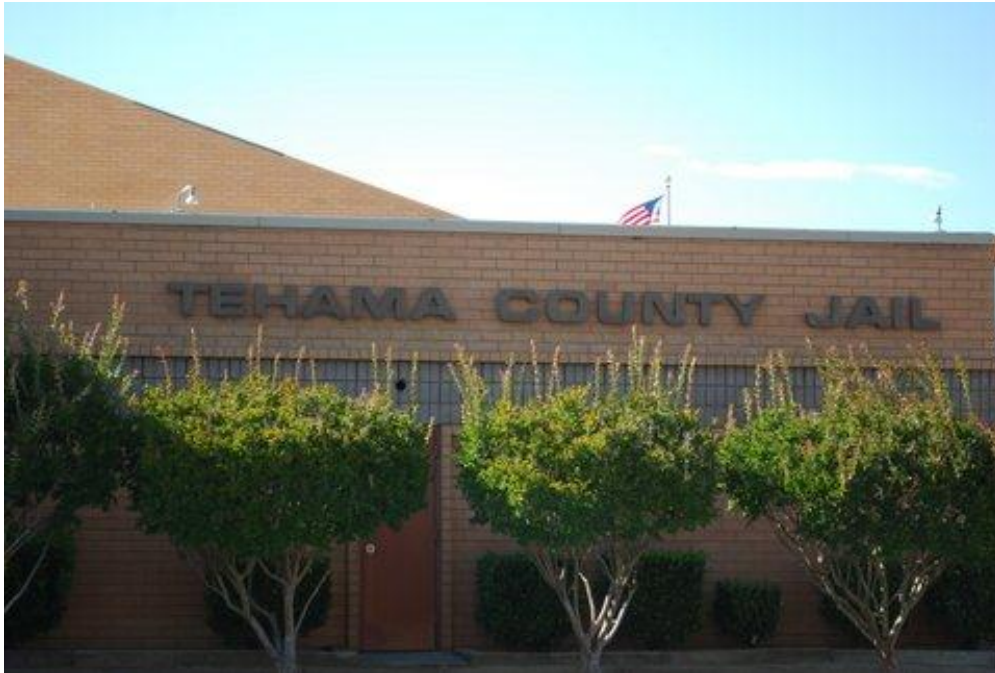
Past & Future Grand Jury Recommendations

Mark Murphy, Chair

Members: Russell Doyle

2014 – 2015
Tehama County
Grand Jury Agency
Inquiries

Tehama County Jail Inquiry



Tehama County Jail Inquiry

SUMMARY

Penal Code 919(b) stipulates that the Grand Jury shall inquire into the condition and management of the public prisons within the county, which includes both state and local correctional facilities. Members of the current 2014-2015 Tehama County Grand Jury toured the County Jail as required.

The members of the grand jury found that the Tehama County Jail was:

- Within the legal limits for the number of inmates housed.
- Taking steps to increase the number of sobering/safety cells available.
- Having equipment problems that were interfering with inmate's ability to participate in the GED program.
- Having difficulty filling a Bilingual Instructor position.
- Within legal requirements in regards to several areas of inmate complaints i.e. room temperature, etc.
- Taking steps to facilitate inmate transition to public life.
- Housing inmates for longer sentences than for which it was designed.

GLOSSARY

CO – Correctional Officer

CS – Correctional Sergeant

DA - District Attorney

GED – General Education Degree

IP – Internet Protocol

IT – Information Technology

MRT – Moral Reconciliation Therapy

BACKGROUND

Civil Grand Juries are required to examine, evaluate and report on physical and administrative conditions of public jails within their county. The County Jail located at 502 Oak St. was visited by members of the Tehama County Grand Jury.

METHODOLOGY

On December 8, 2014, Members of the Grand Jury visited the Tehama County Jail. The Interview was conducted with the Jail Chief and the tour was with a Correctional Officer. Inmate complaints, grievances, and incident reports were reviewed.

DISCUSSION – COUNTY JAIL

Staffing and Cells

The facility was found to be well kept and clean. Legal inmate count for this jail is 208; however, it has 227 beds. As of the interview date, there were 187 inmates. When the count reaches 191, the Jail's "rated capacity" by the Board of State and Community Corrections (BSCC), Jail administration starts to evaluate who is incarcerated, who can be released by "natural" release or expedited by early release. It creates the domino effect, they don't just 'book and release'; this means the administration does not book a person and immediately release them due to limited accommodations.

There must be one female staff member on every shift. At the time of this interview the staff consists of 2 female CS's, 2 male CS's, 7 female CO's and 23 male CO's. The ratio of CO's to inmates is one to six. More than six inmates require 2 CO's per shift.

As noted in the previous Grand Jury report, there still is only one sobering cell and one safety cell. This is a continuing problem during rodeo times as there may be up to 10 persons in the one sobering cell at a time. These cells are video monitored with physical checks each hour. However, dispatch is being relocated and construction is currently underway to free up room for additional sobering and safety holding cells. The safety or suicide watch cell is used for inmates with mental health issues. Inmates may be suicidal, or want to hurt themselves or others at the facility. For safety purposes, the inmate's clothing is removed while in this cell.

Continuing Education

The jail offers a General Education Degree (GED) to inmates that wish to participate. It is strictly a volunteer program and inmates do not have to qualify for this program as stated in a previous Grand Jury report. An inmate simply needs to complete an application and they are enrolled. The self-paced curriculum is computer based and the computers are available 24/7.

There are ongoing issues with the classes. The computers are outdated and due to IT issues and IP address changes, there is frequent down time. This makes it difficult to complete the lessons. The contracted IT Company quoted \$15,000 to bring the computers up to current standards.

The Jail Administration continues to work with the Department of Education to fix some of the computer problems. They are also looking into changing IT companies. Currently there are 20 inmates taking the GED classes. The administration is working with the County Superintendent of Schools with the goal of obtaining new computers.

Because of the self-paced curriculum, there are no instructors. The administration is partnering with Shasta College to add more classes. The County continues to accept applications for a bilingual instructor; however, to date no applicants have been able to pass the background check.

Parenting classes are available in conjunction with the Department of Social Services. The classes are available to all inmates but they must initiate a request for this service. These classes are on a 'Request only' basis and are an individual "one on one" forum, not classroom based.

Complaints, Grievances, and Incident Reports

The Grand Jury asked to view at least four complaints, grievances, or incident reports.

1. Heating and Cooling: The Jury was informed that most of the complaints are about heating and cooling issues. However, Title 24, Facility Building Code, regulates the jail temperature. Temperature is to stay between 65 and 90 degrees. The Code also states that if the temperature rises above 85 or falls below 69 the Captain is to be contacted. In the past two years, the temperature has never fallen below or been higher than those thresholds.
2. Food: Another continuing complaint is regarding the food. This too is regulated under Title 15 which regulates food and calories. The facility is only required to offer one hot meal per day. However, this jail offers two; one at breakfast and one at dinner. Lunch is a cold meal. The jail tries to honor legitimate religious diet requests that require vegan or vegetarian meals.
3. Medical: The latest complaint is in regards to Health Services. The jail is required to have some type of medical services available to all inmates. Currently, the jail employs two full time nurses who work 12 hour shifts during the day. If a medical emergency arises after hours, the inmate is transported to the local hospital by either the Sheriff or ambulance depending on the issue. Social Services work with inmates who don't have insurance, but are eligible; so that they will have medical insurance upon their release.
4. Contraband: Incident reports are completed by the CO's upon inspections. Most reports involve finding contraband in the inmates' cell or on their person. Items such as tattoo guns, tobacco and illegal substances are usually found. Only a full body scanner would prevent these items from coming in from the outside. However, the cost of the scanner is approximately one million dollars.

Re-entry to Civilian Life

Tehama County Jail is one of two jails within California using a new system to assist inmates in returning to public life. It is called OHIO Risk Assessment. It assesses their (inmates) needs and what kind of programs from which they might benefit. Programs include Moral Reconciliation Therapy (MRT); which is similar to Narcotics Anonymous (NA) and Alcoholics Anonymous (AA).

There is not an exact percentage of repeat offenders, but according to the CO, those that do come back are typically charged with drunk in public, DUI's and Domestic Violence.

The jail now houses inmates who are serving a 3-10 year sentence and it was not built or designed to do so. There is currently a proposal for an expansion to add an additional 64 more beds. Although county jails were not designed to house hardened criminals, this jail currently has 12 inmates charged with murder. It can take anywhere from 9 months to 2 years before these inmates go to trial. For other inmates, it can be a year before they go to trial. After trial, those who are sentenced to prison time are bused to Tracy where there is a holding facility. From there they are bused to the prison where they will serve their time. Tehama County has an agreement to transport inmates from other local county jails to designated prisons.

FINDINGS

F1 The Tehama County Jail Facility is within its legal inmate count.

F2 Additional Sobering/Safety cells are being constructed.

F3 It is difficult for inmates to complete GED lessons due to outdated computers.

F4 Jail Administration has been unable to find a qualified applicant for a bilingual instructor position.

F5 Jail Administration has remained within legal requirements related to building temperature, inmate meals, and inmate medical care.

F6 A new program to assess inmate's needs in returning to public life has been implemented.

F7 The Jail is housing inmates with longer sentences and charged with more serious offenses than for which it was designed. There is a proposal to add an additional 64 beds to the facility.

RECOMMENDATIONS

R1 None

R2 None

R3 The Tehama County Sheriff should continue working with the County Superintendent of Schools to update the computers used for GED program. The Sheriff should also have staff research the availability of any grants designed for this purpose. The Sheriff should also attempt to obtain adequate used equipment by reaching out to local schools, other jails, and businesses.

R4 The Tehama County Sheriff should designate a jail administrator to create a job description for the bilingual instructor position for the GED program.

R5 None

R6 None

R7 The Tehama County Sheriff shall create a report outlining any changes to the facility that will be required to maintain the health and safety of the inmates and the staff at the Tehama County Jail as a result of incarcerating inmates for longer sentences and more serious offenses than the Jail was designed. The findings of this report shall be considered in the planning of any proposed additions to the facility.

REQUEST FOR RESPONSES

Pursuant to Penal Code section 933.05, the grand jury requests responses as follows:

The grand jury requires a response from the Tehama County Sheriff and the Tehama County Board of Supervisors on R3, R4, and R7.

Tehama County Juvenile Hall



Tehama County Juvenile Hall

SUMMARY

Penal Code 919(b) stipulates that the Grand Jury shall inquire into the condition and management of the public prisons within the county, which includes both state and local correctional facilities. Members of the current 2014-2015 Tehama County Grand Jury toured the Juvenile Hall.

The jury was provided a thorough tour of this facility. They observed “A day in the life” of a county ward and the makeup of the pods. The jury also had an opportunity to visit with three wards during their kitchen duty.

During the tour they found that the Juvenile Hall:

- Was well below its maximum capacity.
- Provided appropriate educational opportunities to the detained wards.
- Had some food wasted during the evening meal.
- Currently is without a Superintendent.

GLOSSARY

MRT – Moral Reconciliation Therapy

Ward – Juvenile Inmate

BACKGROUND

Civil Grand Juries are required to examine, evaluate and report on physical and administrative conditions of public jails within their county. The Juvenile Hall located at 1840 Walnut St. was visited by members of the Tehama County Grand Jury.

METHODOLOGY

On December 8, 2014, the Grand Jury interviewed management-level personnel of the Tehama County Probation Department, who provided a tour of the facility.

DISCUSSION – JUVENILE HALL

This facility was built in 2003 based on a 50-year population estimate. The capacity is 64 beds, however in the last five years the highest number they've had is 25. There are currently 15 wards in residence.

Within the first 90 hours or so, all juveniles go through an M.A.T.T. (Multi Assessment Treatment Team). They are seen by a doctor to make sure there are no medical issues assessed to determine if they are harmful to themselves or others, go to court to determine the length of their stay; and have an Education Assessment conducted to determine their educational level.

The ward area is divided into three pods. Each pod has a classroom and day area. There are currently 15 wards split between two pods. Wards with behavior issues are housed in Pod A. Once they improve, they can be moved to Pod B. Each day area is equipped with a TV that has cable. One pod has a foosball table and a ping pong table. The third pod is currently being used as storage, and the classroom within this pod is used as a staff training room.

The wards are awakened at 7:00 a.m. and have time for personal hygiene and then breakfast. School starts at 8:30 a.m. The Tehama County Dept. of Education provides a principal, a teacher and a teacher's aide. The curriculum is individualized to each ward based on assessments. Their packets are designed according to where they are in their studies. The teachers work closely with the public schools because it is the goal of this facility that when a ward leaves, they are prepared to return to mainstream school. School session is over at 2:30 p.m.

The current age range of wards is 11-19. Legally, this facility can keep a ward until the age of 21. However, if the ward was tried as an adult, then at the age of 18 that ward is remanded to prison or county jail depending on the crime.

There is not a strict exercise program for the wards, but there is gym equipment and an obstacle course on site.

Like the county jail, the Juvenile Hall uses the MRT assessment, an evidence based practice. The assessment is used on each ward and it looks at their strengths and tries to reinforce them; then looks at weaknesses and tries to remediate them.

Juvenile Hall wards are required to have one hot meal per day and that meal is served at lunch. Dinner, which is around 4:00 p.m., is usually a sandwich, chips, a fruit and water. We observed the sandwiches being made in the kitchen where two female wards and one male ward were assisting in the preparation.

Each ward was provided a sandwich with packets of mayonnaise and mustard. One by one they were called up to the table to get their food. While observing this, we witnessed all wards except the two females who helped in the kitchen walk to the garbage can and throw their sandwich away, along with the condiments.

Currently there is not a Superintendent at the Juvenile Hall. The Chief Probation Officer is holding interviews and performing background checks and is hoping to have the position filled shortly.

FINDINGS

F1 The Juvenile Hall is well below its maximum capacity, and should be able to absorb any foreseeable increases due to population growth in the county.

F2 The wards in the Juvenile Hall are provided with individualized educational opportunities appropriate to their assessed needs.

F3 When sandwiches are served, much of the late afternoon meal is being wasted by the wards.

F4 The Juvenile Hall does not currently have a Superintendent.

RECOMMENDATIONS

R1 None

R2 None

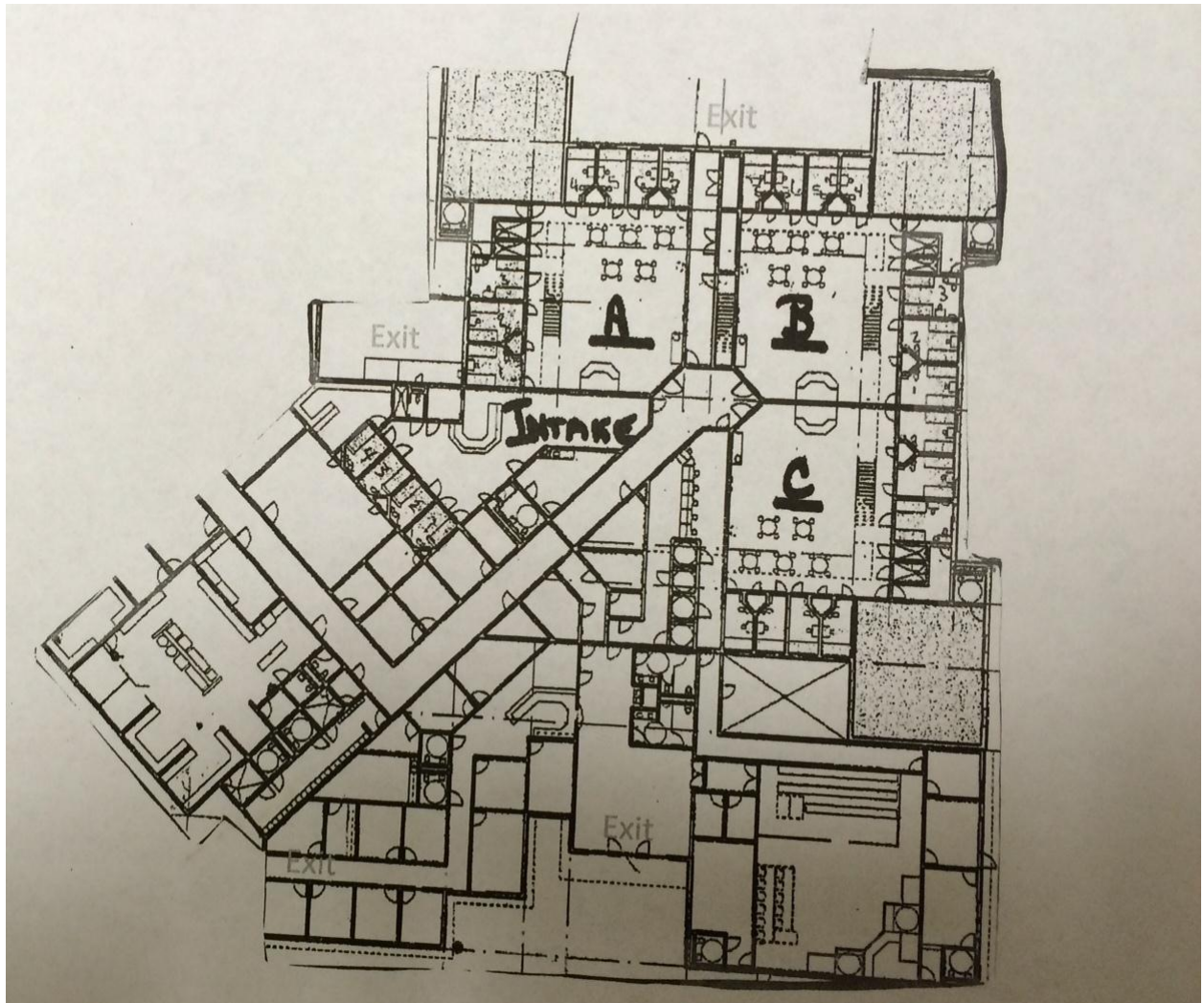
R3 The Chief Probation Officer should investigate alternatives to the evening meal in order to reduce the amount of food wasted.

R4 The Chief Probation Officer should accelerate the search for a Superintendent at the Juvenile Hall.

REQUEST FOR RESPONSES

Pursuant to Penal Code section 933.05, the grand jury requests responses as follows:

The 2014-2015 Grand Jury requires a response from the Tehama County Chief Probation Officer and the Tehama County Board of Supervisors on R3 and R4.



Floor plan showing Pods at Juvenile Hall



Classroom at Juvenile Hall



Pod Day Area

Tehama County Day Reporting Center



Concessions stand at Red Bluff State Theater crafted by DRC Woodshop

Tehama County Day Reporting Center

SUMMARY

The 2014-2015 Tehama County Grand Jury conducted an investigation of the Day Reporting Center pursuant to Penal Code section 925, which authorizes the Grand Jury to “investigate and report on the operations, accounts, and records of the officers, departments, or functions of the county...”

Grand Jury members found the DRC:

- Provided vocational training programs for Post Release Community Supervised (PRCS) inmates.
- Employed a variety of monitoring strategies to ensure that the inmates complied with the requirements of participation in the program.
- Offered benefits to local government agencies and the community through the products of the vocational training programs.
- Lacked sleeping facilities for transitioning women at either of the two Sober Transitional Homes.
- The County does not provide resources for inmates upon release. Some inmates lack resources upon release.

GLOSSARY

CPO – Chief Probation Officer

DRC – Day Reporting Center

PRCS – Post Release Community Supervised

BACKGROUND

Civil Grand Juries are authorized to examine, evaluate and report on physical and administrative conditions of county agencies within their county.

The Day Reporting Center (DRC) located at 780 Antelope Dr. is a new program started in 2014, so it has not previously been visited by the Tehama County Grand Jury.

METHODOLOGY

On January 22, members of the Tehama County Grand Jury toured the Day Reporting Center and interviewed management-level personnel of the Tehama County Probation Department. In addition, the members of the Grand Jury interviewed five DRC program participants.

DISCUSSION - DAY REPORTING CENTER

The DRC has been up and running for about 10 months and is owned by the County.

There are three areas to the DRC facility: Reception, Training Room, and the inmate work centers. The Training Room can seat up to 32 for training classes, and has been used by other local government agencies for training. The inmate work centers consist of an auto shop, a woodworking shop and a garden. The auto shop is run by the Sheriff's Department. The County recently purchased a nursery several lots down that wraps around to the back of the DRC. This property is five acres and the plan is to grow food which will be used within the County Jails.

In addition to the main DRC facility on Antelope Dr., the DRC operates two offsite overnight facilities, one a quarter mile down the road from the DRC, and one on Baker Road. These are Sober Transitional Homes used by Probation for treatment and transitioning inmates back into society.

Each home has six beds, counseling rooms, and offices. There are several churches within the area that use these homes for meetings to support life skills for the transitioning inmates.

The homes owned by the County can each accommodate approximately 6 homeless men or transitioning inmates. However, there is no facility for transitioning women upon release.

There are approximately 80-88 inmates wearing the ankle bracelet monitors. Ankle bracelets are used for work release and they are tracked by GPS. This gives the inmate a chance to obtain a job in the Auto Shop, woodworking shop or in the community. If the ankle bracelet is removed, the inmate is sent directly to prison.

People who have been fined can choose to work off their fines at the DRC. These people are called "Alternative Custody Persons."

All inmates must check into the DRC prior to going to their 'scheduled' job. This is a "One strike then start all over" type program. If there is a violation, then they have to start all over earning their way back to participating in the work release program. Those who are on a released base program are subject to unannounced searches at their home, at any time, by any law enforcement i.e. city police, sheriff or probation.

Inmates that are incarcerated for Domestic Violence or are or have been convicted Sexual Predators are not qualified candidates for these programs.

There were 145 ‘Post Release Community Supervised’ (PRCS) inmates and AB109 released an additional 120 inmates. With Proposition 47, some inmates had felonies reduced down to misdemeanors. Approximately 90 PRCS inmates are on the streets and 20 – 35 are currently reporting to the DRC. These inmates are allowed to live at home, but must check into the DRC on a daily basis. The remaining PRCS inmates were remanded to County Jails.

The committee conducted interviews with five inmates at the DRC. The inmates expressed that the facility is doing some good for the community. One inmate said it makes her a “responsible citizen” because it is her “responsibility to report there as if it was a job”. All five were thankful that they are learning a trade, which range from cabinet making, automotive repair, to gardening. All felt they will have some skills when they return to society. All five expressed “extreme gratitude” to have this opportunity.

The work done in the woodworking shop can benefit any government agency, nonprofit organization and any school within the county with all monies coming back to the DRC. The jurors had the opportunity to examine the snack bar at the local theater which the inmates constructed. The craftsmanship “is exceptional,” as stated by a representative of the non-profit organization which owns the facility. When an inmate is released, they do not always have adequate resources. Many have no place to go, no food or clothing, etc.

FINDINGS

F1 The DRC provides PRCS inmates with vocational training opportunities through their auto shop, wood working shop, and garden. The auto shop located at the DRC is run by the sheriff’s department.

F2 PRCS inmates, probationers and alternative custody persons are monitored through the use of monitoring ankle bracelets, required daily check ins at the DRC, participation in their scheduled daily activities, unannounced searches of their homes, and the use of the Sober Transitioning Homes for some of the homeless male inmates.

F3 Any county government agency or local nonprofit organization can contract for projects from the woodworking shop.

F4 The expansion of the garden will enable the DRC to provide food to the County Jail and Juvenile Hall.

F5 There is no sleeping facility for transitioning women at either of the Sober Transitional homes run by the DRC. The two homes can accommodate 6 men at each location.

F6 Not all inmates released back into the community possess or have adequate available resources to provide for themselves.

RECOMMENDATIONS

R1 None

R2 None

R3 None

R4 The Tehama County Sheriff and Chief Probation Officer should complete the plan for expanding the garden to the newly purchased land and begin supplying food to the county jail by 2016.

R5 The County should initiate a study to recommend a location for housing transitioning women upon release to the DRC.

R6 The County should investigate accessing AB109 or other monies to provide resources to departing inmates. This includes creating a plan for exit in collaboration with county social services to help inmates acclimate back into the community upon release.

REQUEST FOR RESPONSES

Pursuant to Penal Code section 933.05, the grand jury requests responses as follows:

The Grand Jury requires a response from the Tehama County Chief Probation officer, Tehama County Sheriff, Tehama County Director of Social Services, and Tehama County Board of Supervisors on R4, R5, and R6.

The State of Water Conservation in Tehama County



Tehama County Public Works Department

The State of Water Conservation in Tehama County

SUMMARY

The 2014-2015 Tehama County Grand Jury conducted an investigation of the Tehama County Public Works Department due to public concern regarding water usage, and water conservation in Tehama County. The Tehama County Public Works Department was last visited by the Tehama County Grand Jury in 2004-2005.

The grand jury found the following;

- Issues related to water conservation are overseen by the Tehama County Flood Control and Water Conservation District.
- The Tehama County Flood Control and Water Conservation District is working with State and Federal agencies to monitor the changing use of ground water and the sustainability of water reserves in the county.
- The Tehama County Public Works Department is working with the City of Red Bluff in developing a Joint Powers Authority to access what assistance can be given to residents in the Antelope area.
- Educational efforts to inform residents most affected by the changes to ground water systems are being made.

GLOSSARY

PWD – Public Works Department

CSD – Community Services District

BACKGROUND

As a result of the current drought conditions in the state and the evidence of wells drying out in some parts of the county such as the Antelope area and the Paskenta area, members of the grand jury were concerned about what steps if any were being taken at the county level to manage and conserve water in Tehama County.

After some research it was determined that any activities related to these questions fell under the jurisdiction of the Tehama County Public Works Department.

The Flood Control division provides general flood control protection activates. The Water Conservation division provides general water resources and groundwater management planning and monitoring of water issues affecting Tehama County.

METHODOLOGY

Members of the Grand Jury met with and interviewed management-level personnel in the Tehama County Public Works Department on December 18, 2014. The purpose of the interview was to gain knowledge of the responsibilities and function of the department pertaining to water conservation and water management.

DISCUSSION

The responsibilities of the Tehama County Public Works Department include Administration, Engineering, Operations, Transportation, Flood Control, and Water Conservation. The current Public Works Director came to Tehama County with thirty-four years background experience, and has been at the position since 2005.

Issues falling under the jurisdiction of the Tehama County PWD regarding water issues are, but not limited to, flood control, ground water management, and water basin management (including monitoring of the amount of basin recharge).

Issues regarding water conservation are overseen by the Tehama County Flood Control and Water Conservation District Board. The board is made up of the Tehama County Board of Supervisors. The board works with such agencies as the City of Red Bluff in a Joint Powers Authority (in development), the state Department of Water Resources, Cal-Trans, and the Army Corps of Engineers.

A comprehensive water conservation strategy is being developed in cooperation with the state and federal government.

The Tehama County Public Works Department is also investigating strategies for artificially recharging water basins.

The Tehama County Public Works Department is also working with the City of Red Bluff in developing a Joint Power Authority to access what assistance can be given to the residents of the Antelope area.

The Tehama County Public Works Department office itself uses low flow toilets, nozzles on outside hoses, employs a recycled water pressure vehicle cleaning system, and does not water landscaping. Monthly water usage is monitored through monthly billing from the Gerber-Las

Flores CSD. Bottled drinking water is used for field crews and office personnel. The department uses no reclaimed water.

Countywide, the Tehama County Public Works Department provides public outreach at Flood Control and Water Conservation District Meetings, hands out water conservation kits at the front desk to residents, discusses drought issues at public meetings, provides presentations to local groups upon request, and maintains a website with information available to the public.

The total adopted budget for the combined offices for 2014-2015 is approximately \$433,876. The amount expended on education regarding water conservation ranges anywhere from \$1,000 to \$5,000 annually.

Educational efforts are being made to inform residents most affected by changes in land use, and changes in ground water systems. The information has been provided to the Tehama County Board of Supervisors, and to the public via the department's website (www.tehamacountypublicworks.ca.gov/).

The Tehama County Public Works Department is establishing a program to work with schools and local organizations to distribute information concerning water conservation and its importance, along with board meetings and postings on the flood control website. Staff would also coordinate with the local UC Extension office for educational tools and assistance, and with the state department of water resources northern region office.

FINDINGS

- F1 The Tehama County Public Works Department is working with State and Federal Agencies to monitor the changing use of ground water and the sustainability of water reserves in Tehama County.
- F2 A comprehensive water conservation strategy is being developed in cooperation with the state and federal government.
- F3 Tehama County Public Works Department is working with the city of Red Bluff in developing a Joint Powers Authority to access what assistance can be given to residents in the Antelope Area.
- F4 The Tehama County Public Works Department is making efforts to inform and educate county residents most affected by the changes to ground water systems.

RECOMMENDATIONS

- R1 The Grand Jury recommends the Tehama County Board of Supervisors direct the Tehama County PWD to provide information to the citizens of Tehama County on how flow changes in the levels and sustainability of ground water will affect the citizens in a clear and concise format that would be understandable to the average person.
- R2 None.
- R3 The Grand Jury recommends the Tehama County Board of Supervisors follow up with the progress and implementation of the Joint Powers Authority. The Grand Jury also recommends the 2015-2016 Grand Jury follow up with the findings and/or progress with water issues in the Antelope area.
- R4 The Grand Jury recommends the Tehama County Board of Supervisors direct the Tehama County PWD create a specific budget category and project number for educational outreach.

REQUEST FOR RESPONSES

Pursuant to Penal Code section 933.05, the grand jury requests responses as follows:

The Grand Jury requires a response from the Tehama County Public Works Director and he Tehama County Board of Supervisors on R1, R3 and R4.



Water Conservation Kit available at Tehama County Public Works Department

PAST AND FUTURE GRAND JURY RECOMMENDATIONS AND CITIZEN COMPLAINTS

FOLLOW UP

The 2013-2014 Tehama County Grand Jury recommended the 2014-2015 Grand Jury review the following:

- The citizen complaint that was submitted in April 2014. The 2013-2014 Grand Jury did not feel there was adequate time to thoroughly and properly investigate this topic.

Response: The 2014-2015 Grand Jury chose not to take action on this item.

RECOMMENDATIONS

The 2014-2015 Grand Jury recommends that the 2015-2016 Grand Jury review the following:

- Follow up on with the findings and/or progress with water issues in the Antelope area.

CITIZEN COMPLAINTS

The 2014-2015 Grand Jury acknowledged receipt of eight Citizen Complaints.

RESPONSES TO THE RECOMMENDATIONS OF THE 2013-2014 TEHAMA COUNTY GRAND JURY

After reviewing the 2013-2014 Grand Jury report, the Tehama County Board of Supervisors requested a response to recommendations in three county services areas.

1. The Coroner which is overseen by the Sheriff.
2. The Jail, which is also overseen by the Sheriff.
3. The Public Guardian/Administrator.

Pursuant to Penal Code 933.05, each department responded in a timely manner.

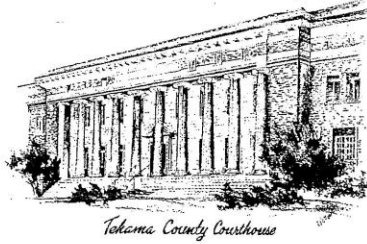
On the following pages are four documents:

1. The Tehama County Board of Supervisors response to the submitted responses from the individual departments.
2. The Tehama County Sheriff's response to the Grand Jury recommendations concerning the Jail and the Coroner's Office.
3. The Red Bluff Union Joint Union High School District's response to the Grand Jury recommendations regarding safety.
4. The Office of Public Guardian/Administration response to the Grand Jury recommendations regarding the Public Administrator Office.

...

Board of Supervisors
COUNTY OF TEHAMA

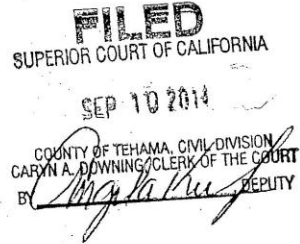
District 1 – Steve Chamblin
District 2 – Sandy Bruce
District 3 – Dennis Garton
District 4 – Bob Williams
District 5 – Burt Bundy



Williams J. Goodwin
Chief Administrator

September 9, 2014

Honorable C. Todd Bottke
Judge of the Superior Court
County of Tehama
P.O. Box 248
Red Bluff, CA 96080



Re: Response to Grand Jury 2013/14 Report

The Tehama County Board of Supervisors has received and reviewed the 2013/14 Grand Jury Report. We thank the members of the Grand Jury for their service to the community by providing thorough investigation and thoughtful findings and recommendations.

The Grand Jury has requested a response to recommendations in three county service areas. The Coroner and Jail, which are both overseen by the Sheriff; and the Public Guardian/Administrator. Pursuant to Penal Code 933.05 each department has responded in a timely manner. The Board of Supervisors has reviewed these responses and will refer to them in our response.

TEHAMA COUNTY SHERIFF-CORONER

Findings

- F1. We concur that the office of the County Coroner functions well, fulfilling its responsibilities under Government Code 27491.
- F2. We concur with and appreciate the Grand Jury's acknowledgement of the dedication of staff in the Coroner's office.

F3. We concur with the need for additional cold storage to accommodate larger sized bodies.

F4. We concur that commercial type washing facilities would improve efficiencies.

Recommendations

R3. The Board of Supervisors agrees with this recommendation and included funding for cold storage for two large bodies within the FY 2014/2015 budget.

R4. We agree with this recommendation and will support the Sheriff's plan to acquire and install a commercial washer and dryer this fiscal year.

TEHAMA COUNTY JAIL

Findings

F1-F9. We concur with the Grand Jury's findings.

Recommendations

R1. We agree that the ceiling tiles should be replaced now that the roof project is complete. An additional full-time Facilities Maintenance Technician I/II has been included in the FY 2014/2015 budget to address this and other maintenance needs in the Jail, Sheriff's Administrative Office, and Day Reporting Center.

R4. We agree with this recommendation and will support the Sheriff in his efforts to expand educational opportunities including a GED program and parenting classes. As noted in the Sheriff's response, this is one of the growing needs created by housing longer term inmates as a result of AB109.

R6. We agree with this recommendation seeking more time diversion options including both indoor and outdoor activities. Similar to recommendation R4, the Sheriff recognizes the needs of longer term inmates. Opportunities are limited in the short term, but the County continues to seek funding for a Re-entry and Day Reporting Center that will provide expanded indoor and outdoor space to address these concerns in the long term.

R8. We agree with this recommendation that additional bilingual personnel would be beneficial to jail operations. As stated by the Sheriff, bilingual personnel are eligible for pay incentives and are always encouraged to apply for open correctional officer positions.

PUBLIC GUARDIAN / ADMINISTRATOR

Findings

- F1. We concur with the finding that the Public Administrator's office is in compliance with the laws under which they are governed. We recognize the dedication and commitment of staff to provide this essential service and continue to take steps to support their efforts.
- F2. We concur with the finding that the Public Administrator may be in need of additional staff as the county's population increases.

Recommendations

- R2. We are in agreement with this recommendation. The Board recognizes that the volume of eligible estates exceeds current capacity resulting in delays and lost opportunities for the collection of fees. The FY 2014/2015 budget includes two positions to be funded as of January 1, 2015. We believe that the addition of one Deputy Conservator / Administrator and one Psychiatric Aide will result in the reconciliation of additional Public Administrator cases and provide needed support to the Public Guardian as well.

In closing, the Board of Supervisors again would like to express its appreciation to the members of the FY 2013/2014 Grand Jury and offer our recognition of the extraordinary commitment required to serve as a member of the Grand Jury.

Sincerely,



Steve Chamblin
Board Chair

Attachments



TEHAMA COUNTY SHERIFF'S OFFICE

Dave Hencratt, Sheriff-Coroner

Mailing Address: P.O. Box 729, Red Bluff, CA 96080

Main Office: 22840 Antelope Blvd., Red Bluff, CA 96080

(530) 529-7940 / (530) 529-7933 FAX

Jail/Dispatch: 502 Oak St., Red Bluff, CA 96080

(530) 529-7900 / (530) 528-7614 FAX

July 08, 2014

Honorable C. Todd Bottke
Judge of the Superior Court
County of Tehama
P.O. Box 248
Red Bluff, CA 96080

Re: Tehama County Sheriff's response to 2013-2014 final report.

Dear Honorable Judge Bottke:

Let me start by thanking all 19 members of the Grand Jury for their hard work and dedication in the past year. I met with members of the Grand Jury as did some of my staff. As always, we found them to be an inquisitive, professional group of people. We look forward to their recommendations each year. They offer a refreshing perspective of areas where we can improve service to our citizens.

The Tehama County Jail continues to be a facility rated by the Board of Corrections as one of the best in the state.

I have received and reviewed the Grand Jury 2013-2014 final report.

The ceiling repairs mentioned in the report are generally handled by our Facility Maintenance Technician. We had a new roof installed during the past year and there have been some residual repairs and call back issues with the contractor. The jail is ever evolving and maintenance is prioritized and addressed daily.

We also recognize the growing need to address the issues of housing long term inmates as a result of AB 109. We have initiated a GED program and offer it to all inmates who qualify and meet the criteria to attend the classes. We are exploring additional education options for our inmates including parenting classes. Inmate job opportunities are very limited in the jail. These jobs are assigned to inmates who qualify and go through a selection process offered to all inmates but opportunities are limited.

We have pay incentives in place for bilingual personnel and we use a language line services when necessary. Language Line Services is a telephone service we pay for that offers multi-language interpretations.

Serving Our Community with P.R.I.D.E.
P rofessionalism, R espect, I ntegrity, D edication, E quality

The Tehama County Coroner's Office: The Sheriff has budgeted in the 2014-2015 year to purchase and install a two large person cold storage unit. We recognize the need for a laundry room in the coroner's work area and are working on a plan to complete that project.

I would again thank the Grand Jury for their service. We continue our dedication to meeting the needs of the community and the Office of the Sheriff/Coroner.

Sincerely,



Dave Hencratt
Sheriff/ Coroner

Cc: Kathy Lytle
Tehama County Administration

Rick Spencer, Foreperson
Tehama County Grand Jury 2013-2014
P.O. Box 1061
Red Bluff, CA 96080



RED BLUFF JOINT UNION HIGH SCHOOL DISTRICT

P.O. BOX 1507 • 1525 DOUGLASS STREET • RED BLUFF, CALIFORNIA 96080-1507 • (530) 529-8700 • FAX (530) 529-8709

Todd A. Brose, Superintendent

July 14, 2014

Tehama County 2013-2014 Grand Jury
The Hon. C. Todd Bottke
Judge of the Superior Court, Dept. 3
445 Pine Street
P.O. Box 278
Red Bluff, CA 96080

FILED
SUPERIOR COURT OF CALIFORNIA

JUL 24 2014
COUNTY OF TEHAMA, CIVIL DIVISION
CARYN A. DOWNING, CLERK OF THE COURT
BY *[Signature]* DEPUTY

Dear Jurors:

The Red Bluff Joint Union High School District (RBJUHSD) thanks the 2013-2014 Tehama County Grand Jury for its diligent work with investigating the safety at Red Bluff Joint Union High School. The safety of our students and staff is a top priority of the District. With the increased violence in schools across the nation, it is imperative that agencies within the community collaborate to provide a safe environment for all citizens, especially the youth.

The District appreciates the Grand Jury's recognition of the steps RBJUHSD has taken to provide security and safety to students and staff. In addition to these steps, the district has also implemented the following measures:

- Assigned an employee to provide additional campus security.
- The Dean of Students and Associate Principals also have monitors in their offices that are connected to the school's surveillance system.
- Red Bluff Police Department (RBPd) patrols are also present during dances and football games.
- Site Administration routinely supervises the perimeter of campus.

Furthermore, Clean Green, along with 100s of community members, worked to clear the area near Brickyard Creek. For their Senior Make-a-Difference Day, twenty (20) seniors donated their time in cleaning up the area as well.

These are positive steps toward making the Red Bluff Union High School Campus safer; however, as the report details, there is more that can be done. The new administration at Red Bluff Joint Union High School is committed to providing a positive school climate where all students can feel safe and successful. With that, the following is a response to each recommendation from the Grand Jury.

1. Recommendation- RBUHS Administration should seek additional grants to enhance campus security and create a 5-year implementation plan. **Response- The administration is pursuing such grants. It currently was approved for an after school grant, ASSETS, that will allow students to receive**

BOARD OF TRUSTEES

Marianne Willard

Barbara McIver

Elsa Martinez

Lida Chase

Jack Hansen

An equal opportunity employer. Does not discriminate on the basis of sex, sexual orientation, gender, ethnic group identification, race, ancestry, national origin, color, or mental or physical disability.
(Title VI, Title IX, and Section 504 Vocational Rehabilitation)

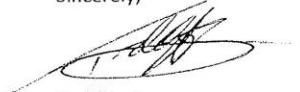
after school tutoring and enrichment activities, keeping them active after school. This is a 5 year grant. The District is also included in a grant application through the Tehama County Department of Education that would allow additional Counseling for students and Behavior Intervention Support training for staff. This will target our more at-risk students. These grants would also support the new Local Control Accountability Plan (LCAP) which includes the goal, "Improve, support, and sustain student engagement with a positive and safe school climate."

2. Recommendation- RBUHS Administration should upgrade the surveillance system. The surveillance cameras should connect to the Red Bluff Police Department (RBPD) system. **Response- Administration recognizes the importance of a comprehensive surveillance system and is working with Red Bluff Elementary School District and RBPD to connect our surveillance system.**
3. RBUHS Administration should implement visible photo ID for personnel by 2014-2015. **Response- At the regular May Board Meeting, the board discussed this item. It was agreed that it would be set aside for the new Superintendent to address at the beginning of the school year. New administration will evaluate this recommendation.**
4. RBUHS Administration should evaluate the feasibility of establishing a closed campus. **Response- The District has approved, in its LCAP, that a Facility Safety Needs Assessment be completed in 2014-2015, to include the impacts of closing the campus. A multi-year plan will be developed from the results of the assessment.**
5. RBUHS Administration should install an AVL/GPS tracking system on school buses by the 2015-2016 school year. **Response- Administration will review the feasibility of this in the 2014-2015 school year.**

Finally, the District has established five (5) goals in its LCAP. Two (2) of those goals are related to school climate and facility planning. They are, specifically: Improve, support, and sustain student engagement with a positive and safe school climate; *and*, Improve, support, and sustain student learning and safety by maintaining and improving district facilities.

Again, the District is dedicated to providing a safe learning environment for all students and staff, and it is appreciative of the Grand Jury in providing recommendations to that effect. Please feel free to contact the district if you have any questions or concerns.

Sincerely,



Todd A. Brose
Superintendent

cc: Larry Champion, Tehama County Superintendent of Schools



OFFICE OF PUBLIC GUARDIAN/Administrator
COUNTY OF TEHAMA

727 Oak Street, 1st Floor, Suite 116
Red Bluff, California 96080-3667
530-527-5634 Telephone
530-527-9573 Facsimile

Melani Rodrigue, M.A.
Public Guardian/ Public
Administrator
Conservator/Investigator

Wendy Aria, Deputy
Dale Tisserand, Deputy
Erika Martinez, Legal Secretary I

August 26, 2014

The Honorable Judge C. Todd Bottke
Judge of the Superior Court
County of Tehama
P.O. Box 248
Red Bluff, CA 96080



Re: 2013/2014 Grand Jury Response

I have reviewed the 2013/2014 Grand Jury Report and would like to thank the Tehama County Grand Jury members for their time and commitment to this community.

Below are the findings and recommendations along with my responses.

F1 The Tehama County Public Administrator's Office is in compliance with the laws under which they are governed.

R1 None

Response 1 The acknowledgment is much appreciated. This department takes our authorities seriously and aims to be in compliance with the law.

F2 The Office of the Public Administrator may be in need of additional staff as the county's population increases.

R2 The Grand Jury recommends that the Tehama County Public Administrator hire additional staff when funds become available and as the need arises.

Response 2 This department is in agreement with this finding.

Thank you again to the Grand Jury for their investigation of this department. It was a pleasure meeting with the committee and sharing our community work and mission. Please feel free to call me if I can be of further assistance.

Sincerely,
Melani Rodrigue
Melani Rodrigue, Director
Public Guardian/ Public Administrator

AUDIT SUMMARY

The 2014-2015 Grand Jury confirmed that an audit was conducted for the 2013-2014 Fiscal Year.

The report was submitted on March 30, 2015.

On the Independent Accountant's Report "No Exceptions were noted as a result of our procedures" for each of four procedures.

**Summary of Agencies
Visited by Past Grand
Juries**

Agencies visited by Past Grand Juries in last 10 years										
Agencies Listed According to Grand Jury Committee Responsibly	14-15	13-14	12-13	11-12	10-11	09-10	08-09	07-08	06-07	05-06
Commissions and Special Districts										
Advisory Committee Red Bluff Community/Senior Center										
Agricultural Commissioner						V.C.				
Agricultural Advisory Committee										
Air Pollution Control District Hearing Board						V				C
Air Pollution Control Officer			V			V.C.				
Airport Land Use Commission										
Building Inspection Board of Appeals										
Cemetery Districts										
Belle Mill Cemetery District										
Corning Cemetery District					C.	V.C.		V		
Kirkwood Cemetery District										
Los Molinos Cemetery District								V		
Manton Cemetery District										
Paskenta Cemetery District								V		
Red Bluff Cemetery District								V		
Tehama Cemetery District								V		
Vina Cemetery District										
CMSP Governing Board (County Medical Seniors Program)										
Cal Works Administrative Oversight Team										
Commission on Aging Area Agency										
Community Action Agency Tripartite Advisory Board										
Community Service Districts										
Gerber/Las Flores Community Serv. Dist.								C		
Los Molinos Community Service District										
Paskenta Community Service District										
Rio Rancho Estates Community Serv. Dist.										
Corning Health Care District										V
Corning Veteran's Build. House Comm.										
County Land Plan Committee										
Fire Protection District (Capay)										
Hardwood Advisory Committee										
Heritage and Historical Records Commission										
Indian Gaming Local Community Benefit Committee				V						
Irrigation Districts										
Anderson/Cottonwood Irrigation District										
Deer Creek Irrigation District										
El Camino Irrigation District								V	C	V
Job Creation Task Force										
V=Routine Advisory C= Citizens Complaint										

Agencies visited by Past Grand Juries in last 10 years										
Agencies Listed According to Grand Jury Committee Responsibly	14-15	13-14	12-13	11-12	10-11	09-10	08-09	07-08	06-07	05-06
Commissions and Special Districts										
Local Agency Formation Commission (LAFCO)										
Local Transportation Commission										
Los Molinos Veterans Building House Committee										
Red Bluff Veterans Building House Committee										
Senior Center Joint Powers Agency										
Tehama County Sanitary Landfill Agency										
Tehama County Children and Families Commission										
Tehama County Fish and Game Commission										V
Tehama County In-Home Supportive Services Advisory Committee										
Tehama County Mosquito and Vector Control District										
Tehama County Olive Fruit Pest Management District										
Tehama County Resource Conservation District										
Tehama County Resource Conservation Advisory Committee										
Tri County Economic Development District										
Board Directors						V				
Loan Administration Board										
Water Districts										
Corning Water District									V	
Kirkwood Water District										
Mineral County Water District				V	C					
Proberta Water District										
Rio Alto Water District										
Sky View County Water District										
Thomes Creek Water District										
County/City Governments										
Office of the Chief Administrator						V				
Administration/Risk Management										
Facilities Maintenance						V				
Personnel/Risk Management										
Purchasing Department										
Assessor						V.C.				
Auditor Controller									V	
Board of Supervisors			V			V.C.		C		
Clerk of the Board Of Elections								V.C.	C	
County Clerk & Recorder					C	V		C		
Corning Fire Department						V.C.		C		V
Deferred Compensation Committee										
General Plan Revision Project Advisory Committee										
Planning Commission										C
V=Routine Advisory C= Citizens Complaint										

Agencies visited by Past Grand Juries in last 10 years										
Agencies Listed According to Grand Jury Committee Responsibly	14-15	13-14	12-13	11-12	10-11	09-10	08-09	07-08	06-07	05-06
County/City Governments										
Corning City Council/City Government						V.C.				
Red Bluff City Council/City Government					C					C
Red Bluff Fire Department								C		V
Shasta College I-5 Technology Center Site Selection Advisory Committee										
Tehama City Council/City Government										
Tehama County Fire Department				V						
Tehama County Interagency Coordination Council Director										
Tehama Local Development Corporation			V							
Tehama Local Development Corporation Advisory Committee										
Treasurer Tax Collector									V	
Treasury Oversight Committee										
Farm Advisor				V						
Librarian/Library				V						
School Districts										
Antelope School District					V					
Coning Elementary School District								C		
Corning Union High School District								V.C.		
Elkins School District								V		
Evergreen School District										V
Flourmoy School District					V		V			
Gerber School District			V							
Kirkwood School District				V	V					
Lassen View School District										V
Los Molinos Unified School District	V				C					
Red Bluff Union Elementary School District									V	
Red Bluff Joint Union High School District		V							V	
Reeds Creek School District			V							
Richfield School District				V	V					V
Tehama County Board Of Education						V.C.				
Tehama County Department of Education	C					V				
Tehama County Local Child Care Planning Council						V				
Tehama County Animal Care Center				V						

V=Routine Advisory C= Citizens Complaint

Agencies visited by Past Grand Juries in last 10 years										
Agencies Listed According to Grand Jury Committee Responsibly	14-15	13-14	12-13	11-12	10-11	09-10	08-09	07-08	06-07	05-06
Commissions and Special Districts										
Health and Welfare										
Department of Social Services			C			V				C
Adult Services						V				V
Adult Protective Services						V				C
CalWorks										
Child Welfare Service			V			V			C	C
Foster Family Service						V		V		
Public Assistance/Eligibility Program						V				
MediCal/CMSP						V				
Food Stamps						V				
General Assistance						V				
Special Circumstances/Emergency Need						V				
Social Security Advocate						V				
Environmental Health										
Environmental Services Joint Powers Authority										
Tehama County Health Officer										
Tehama County Health Partnership				V				V		
Child Health and Disability Prevention Program and Public Health Nursing										
Drug and Alcohol Services Advisory Board								V		
Health Officer										
Mental Health Center										
Health Center										
Public Health Advisory Board								V		
Social Services Transportation Advisory Council										
Solid Waste Independent Hearing Panel										
Tehama County Drug and Alcohol Advisory Board										
Tehama County Mental Health Board										
Law Enforcement										
911 Response Program					V					
Animal Control					V				C	
Child Support Services			V							
Corning Police Department						V.C.		C		
Public Guardian/Public Administrator		V								
Coroner's Office		V								
County Counsel						V				
District Attorney						C		C		
Victim Witness										
Welfare Fraud										
V=Routine Advisory C= Citizens Complaint										

Agencies visited by Past Grand Juries in last 10 years										
Agencies Listed According to Grand Jury Committee Responsibly	14-15	13-14	12-13	11-12	10-11	09-10	08-09	07-08	06-07	05-06
Commissions and Special Districts										
Law Enforcement										
Law Library Committee										
Local Law Advisory Board										
Local Law Enforcement Block Grant Advisory Committee										
Neighborhood Watch										
Probation Department								V		V.C.
Tehama County Juvenile Hall	V			V				V		V.C.
Red Bluff Police Department									C	C
Ishi Conservation Camp			V							
Juvenile Justice Coordinating Council										
Salt Creek Conservation Camp		V						V		
Sheriff's Office of Emergency Services										
Supplemental Law Enforcement Oversight Committee										
Tehama County Sheriff's Department	C								C	
Tehama County Jail	V.C.	V	V.C.	V				V.C.	V	
Weights and Measures Department										
Public Works/Parks and Recreation			V							
Building Department								V		
City of Red Bluff Parks and Recreation				V						
Coming Public Works/Parks										
Director of Public Works	V									
Freeway Emergencies Services Authority										
Planning Department										C
Red Bluff Water and Sewer Department									V	
Tehama County Building Official										
Tehama County Landfill										
Tehama County/Red Bluff Landfill Management Agency										
Tehama County Parks and Recreation/Courthouse and Grounds										
Tehama County Public Works/Parks			V							
Antelope Park Committee (inactive)										
Camp Tehama Committee										
Cone Grove Park Committee										
Gerber Park Committee										
Mill Creek Park Committee										
Norland Park Committee										
Simpson-Finnel 1 Park Committee										
Ridgeway Park Committee										
Tehama County River Park (Woodson Bridge)										
Tehama County Public Works Works/Roads and Bridges										V
Tehama County Public Works/Transportation				V						
Tehama County Sanitation District #1										
V=Routine Advisory C= Citizens Complaint										

This page left intentionally blank.