



County Voter Information Guide

Consolidated General Election Tuesday, November 5, 2024

Polls are open 7am – 8pm

Tehama County Elections Department
633 Washington Street, Room 17, Red Bluff, CA 96080
Open Monday—Friday, 8am to 5pm

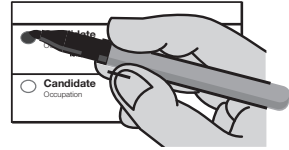
Office: 530-527-8190
Toll Free: 866-289-5307
FAX: 530-527-1140

<https://www.tehama.gov/government/departments/elections/elections@tehama.gov>

052FCE298403

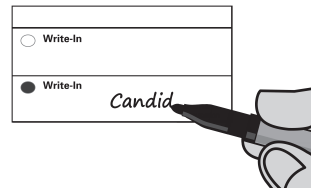
Instructions to Voters

To vote for the candidate you want, completely fill in the oval to the left of your choice.



To vote for a Measure fill in the oval next to the word "Yes" or "No".

To vote for a qualified write-in candidate, write the person's name in the place provided and fill in the oval to the left of the candidate's name.



Do not select more candidates than the number to be elected. You may vote in as many or as few contests as you want. A mistake in one contest does not affect the rest of your ballot.

Use a blue or black ink pen or the pen provided at the polls to mark your ballot. Do not use red ink or highlighter. Do not erase.

If you change your mind or make a mistake, contact the Elections Office at (530) 527-8190 for the procedure to obtain a replacement ballot.

Voting by mail: After voting, review your ballot and place it in the return envelope. Sign and date the envelope in the place provided and mail it back. Your envelope must be signed for your ballot to be counted.



VOTER'S GUIDE INFORMATION SECTION

The Following Pages Contain
Voter Information Applicable to your Ballot
Which May Include:

- CANDIDATES' STATEMENTS
- BALLOT MEASURES
- ANALYSIS
- ARGUMENT PRO & CON
- TEXT OF MEASURES

This guide section does not contain a complete list of candidates. A complete list of candidates appears on the Ballot. Each candidate's statement in this guide is volunteered by the candidate and is printed at the expense of the candidate.

The text, grammar and spelling are as submitted by the authors or candidates.

PROPOSITION 34 – CAMPAIGN SPENDING LIMITS

Among all state legislative candidates appearing on ballots in Tehama County, the following persons have pledged to abide by campaign spending limits as specified in the California Government Code. Candidates agreeing to the campaign spending limits also have the opportunity to publish a statement of qualifications in the local voter information guide.

State Senate, 1st District

MEGAN DAHLE, Party Preference: Republican
DAVID FENNELL, Party Preference: Republican

State Assembly, 3rd District

JAMIE "JAMES" GALLAGHER, Party Preference: Republican
AARON DRAPER, Party Preference: Democratic

TRUSTEDINFO2024

Election officials are your trusted sources for election information

Less than a month until Election Day November 5, 2024! Make sure you've got the correct election information by checking your voter information at: <https://www.sos.ca.gov/elections/cavoter>

Election Day is Tuesday, November 5, 2024! Don't know where to start? Trusted election material is available at: <https://www.tehama.gov/government/departments/elections/>

#Trusted Info 2024 is more than a hashtag! We're ensuring you get the most up-to-date voting information at our secure election website: <https://www.tehama.gov/government/departments/elections/>



052VGIS1124

Top-Two Candidates Open Primary Act

Under the Top 2 Open Primary Act, approved by the voters in 2010, only the top two candidates who received the top number of votes in the primary election will appear on the General Election Ballot. Candidates from these offices may have the same political party preference. Also write-in candidates are no longer allowed for these contests at the General Election. For more information, please contact the Tehama County Elections Department at (530) 527-8190 or toll-free (866) 289-5307.

The voter-nominated offices that the Top 2 Open Primary Act applies to are: Governor; Lt. Governor; Secretary of State; U.S. Senate; Controller; Treasurer; Attorney General; Insurance Commissioner; Board of Equalization, District 1; U.S. Representative, District 1; State Senator, District 1; State Assembly, District 3.

The voter-nominated offices that will appear on the Consolidated General Election Ballot for November 5, 2024 will be: U.S. Senate; U.S. Representative, District 1; State Senator, District 1; and State Assembly, District 3.

PARTY ENDORSEMENTS

Proposition 14, approved by the voters in 2010, authorizes political parties to endorse candidates to Voter-Nominated offices. This pamphlet contains the official endorsements that we received by the deadline and are printed as submitted.

The **American Independent Party** endorses the following candidate(s):

| <u>Candidate Name</u> | <u>Party Preference</u> | <u>Office</u> |
|-----------------------|-------------------------|---------------------------------|
| Doug LaMalfa | Republican | U.S. Representative, District 1 |
| David Fennell | Republican | State Senate, District 1 |
| James Gallagher | Republican | State Assembly, District 3 |

The **Democratic Party** endorses the following candidate(s):

| <u>Candidate Name</u> | <u>Party Preference</u> | <u>Office</u> |
|-----------------------|-------------------------|---------------------------------|
| Adam Schiff | Democratic | U.S. Senate Full Term |
| Adam Schiff | Democratic | U.S. Senate Partial Term |
| Rose Penelope Yee | Democratic | U.S. Representative, District 1 |
| Aaron Draper | Democratic | State Assembly, District 3 |

The **Republican Party** endorses the following candidate(s):

| <u>Candidate Name</u> | <u>Party Preference</u> | <u>Office</u> |
|-----------------------|-------------------------|---------------------------------|
| Doug LaMalfa | Republican | U.S. Representative, District 1 |
| James Gallagher | Republican | State Assembly, District 3 |



052TTPE1124

U.S. SENATE CONTEST

There are two U.S. Senate contests on the
November 5, 2024 Consolidated General Election ballot.

- One for the regular 6-year term ending on January 3, 2031.
- One for the remainder of the current term ending on January 3, 2025.

You may vote for both contests.

Join the Voting Accessibility Advisory Committee and Language Accessibility Advisory Committee!

What is VAAC & LAAC?

The Voting Accessibility Advisory Committee (VAAC) is designed to assist the county Election Departments with issues related to the accessibility of elections for seniors and individuals with disabilities.

The Language Accessibility Advisory Committee (LAAC) is designed to advise and assist with implementation of Federal and State laws relating to access to electoral process by voters with limited English proficiency, so that all persons who can vote can understand the voting process.

Responsibilities:

- Attend quarterly VAAC/LAAC meetings.
- Make recommendations to improve access to voting and election materials.
- Plan/promote outreach to voters with disabilities and language minority communities.
- Provide the public a forum to voice concerns and make recommendations on ways to improve the electoral process for voters with limited English proficiency.

An application is required, please visit:

<https://www.tehama.gov/government/departments/elections/> or call 530-527-8190



**STATEMENT OF CANDIDATE FOR
U.S. REPRESENTATIVE, 1ST DISTRICT**

DOUG LAMALFA

Age: 64

Occupation: Farmer, Member of the United States House of Representatives

Education and Qualifications: The last several years have been difficult for too many of our North State neighbors. Inflation has taken a bite out of family budgets, gas and energy prices have soared, and outside crime and lawlessness have increased in our rural towns. The regulatory challenges we face in Northern California just keep growing.

Bloated federal budgets fuel inflation and add to the national debt. As your representative in Congress, I voted for the Bi-Partisan Fiscal Responsibility Act to limit spending and save taxpayers \$2.1 trillion by cutting bureaucracy and fraud.

I continue to fight to improve the management of our federal forests, more aid for disaster recovery, and tax relief for the victims of wildfires. Increasing water supplies and protecting our water from being wasted by government mismanagement is a priority. I've been able to deliver billions of dollars for Sites Reservoir planning and construction.

Mass illegal immigration, the menace of fentanyl and the tragedy of human trafficking are symptoms of the current Administration's refusal to control the border. I've voted to strengthen and defend the border by completing the border fence, as national security is paramount.

I've consistently worked to bring energy prices down and make America energy independent by increasing domestic oil and natural gas production as well as renewables such as biomass power and clean, cheap hydroelectric. I will always protect our constitutional and individual rights. It is a privilege to be your voice. I'd be honored to receive your vote. www.DougLaMalfa.com or call 530-712-3675.

s/Doug LaMalfa

052C001



**STATEMENT OF CANDIDATE FOR
U.S. REPRESENTATIVE, 1ST DISTRICT**

ROSE PENELOPE YEE

Occupation: Businesswoman, Volunteer NonProfit Leader

Education and Qualifications: I am running for Congress to protect and expand our freedom to access the healthcare we need, to get the education we want, to achieve financial security, and to live in a safe environment.

As a small business owner, a leader in the socially responsible business movement, and a survivor of dictatorship, I know what it takes to persist through tough challenges and build support across differences to drive positive change. And as the North State's representative in Congress, I will use those skills to make life better for the people of this district and all Americans.

My priorities include: guaranteeing quality, affordable healthcare to everyone, ultimately through Medicare for All; increasing funding for education in rural communities, ensuring that everyone who wants to can go to college and expanding apprenticeship programs; protecting Social Security and creating a federal jobs guarantee; restoring women's rights to make decisions about their own bodies; and investing in wildfire prevention and resilience, clean water, and clean energy projects that create good long-term jobs.

To secure these foundations for a thriving community and personal freedom, we must also eliminate the excessive influence of billionaires on our government. I will pursue all avenues for doing that. I'm here to challenge systems that need challenging and provide real representation for the people of this district.

Please go to www.roseforcongress.com to learn more about me and my Care Agenda.

It will be my honor to serve you.

s/Rose P. Yee



**STATEMENT OF CANDIDATE FOR
STATE SENATOR, 1ST DISTRICT**

MEGAN DAHLE

Occupation: Farmer/Businesswoman/Mother

Education and Qualifications: As an Assemblywoman, I championed issues of the North State in Sacramento and successfully secured tens of millions of dollars for our communities.

There is more work to be done.

Reducing California's high cost of living is my top priority.

Families can't afford the rising gas tax, higher taxes and increased healthcare costs.

That's why I fought to reduce the gas tax, backed legislation to cap the price of insulin at \$35 for a 30 day supply, voted to lower taxes on items needed by pregnant women, and supported legislation to require insurance companies to cover diagnostic imaging for women suspected of having breast cancer.

Crime is out of control and we need criminals off our streets.

In the Assembly, I led efforts to crack down on sexual predators, co-authored a law to more severely punish human traffickers, and backed measures to more effectively prosecute fentanyl dealers.

To reduce homelessness, I've supported legislation that addresses mental health and addiction issues.

Working to prevent catastrophic wildfires, I've fought for increased forestry management, proper maintenance of power lines, and increased firefighting resources. These efforts will improve fire insurance availability and cost, protect homes, and save lives.

The California Professional Firefighters, California Association of Highway Patrolmen and CAL FIRE Local 2881 support my re-election. Please join them and my campaign to get California back on track.

Please visit www.votemegandahle.com to learn more about my values.

I would be honored to have your vote.

s/Megan Dahle



**STATEMENT OF CANDIDATE FOR
STATE SENATOR, 1ST DISTRICT**

DAVID FENNELL

Age: 55

Occupation: Entrepreneur

Education and Qualifications: My name is David Fennell. I am running to be your State Senator in the newly redrawn Senate District 1.

From the White House to local offices, there is a concern that current leaders are too aged or sometimes are not healthy enough for the job.

There needs to be a new generation to lead the North State!

Our great farmers literally feed our nation. Our education systems and businesses power the world economy. Yet too often our great North State is outvoted by special interests in Los Angeles.

It is time to elect a North State fighter who will ensure water for farmers, protect our forests against fire and ensure new economic development for our rural communities and inner cities.

The North State is in a state of transitions with a wave of retirees and an influx of new residents and technology companies.

We have problems with homelessness.
Our university enrollments are down.
Crime is up.

To address these problems we need to elect a new generation of leaders!

I am a business owner, but I also come from a farming family. I have the experience and education to lead our great state.

We want a leader who will expand opportunities while preserving our North State way of life.

It is time to elect a fighter!
Our best years are yet to come!
Vote David Fennell for State Senate!
I won't let you down California!

www.fennellforsenate.com

s/David Fennell



**FULL TEXT OF THE
CORNING UNION ELEMENTARY SCHOOL DISTRICT
BOND MEASURE J**

**CORNING UNION ELEMENTARY SCHOOL DISTRICT BOND ELECTION
FOR NOVEMBER 5, 2024**

By approval of this measure by at least fifty-five percent (55%) of the registered voters voting thereon, the Corning Union Elementary School District shall be authorized to issue and sell bonds of up to \$13.7 million in aggregate principal amount to provide financing for the specific school facilities projects listed below in the Bond Project List, subject to all of the accountability safeguards specified herein.

Approval of this measure will renew the originally approved tax rate of \$29.99 levied to repay bonds issued pursuant to the 2002 bond measure election approved by voters within Corning Union Elementary School District. This measure will not increase, but rather extend, the original tax rate that is set to expire in 2027.

ACCOUNTABILITY MEASURES

The provisions in this section are included in this proposition in order that the voters and taxpayers of the District may be assured that their money will be spent to address specific facilities needs of the District, all in compliance with the requirements of Article XIII A, section 1(b)(3) of the State Constitution, and the Strict Accountability in Local School Construction Bonds Act of 2000 (codified at Section 15264 *et seq.* of the California Education Code).

Evaluation of Needs. The Board has evaluated the facilities needs of the District and has identified projects to finance from a local bond measure at this time. The Board hereby certifies that it has evaluated safety, class size and information technology needs in developing the Bond Project List.

Independent Citizens' Oversight Committee. The Board shall establish or empower an existing independent Citizens' Oversight Committee in accordance with Education Code sections 15278-15282 and applicable Board policy, to ensure bond proceeds are expended only for the school facilities projects listed in the Bond Project List. An existing Citizens' Oversight Committee may be empowered by the Board to oversee the expenditure of bond proceeds from this measure. The committee shall be so empowered, or a new committee established, within sixty (60) days of the date when the Board enters the results of the election in its official minutes.

Annual Performance Audit. The Board shall conduct or cause to be conducted an annual, independent performance audit to ensure that the bond proceeds have been expended only on the school facilities projects described in the Bond Project List.

Annual Financial Audit. The Board shall conduct or cause to be conducted an annual, independent financial audit of the bond proceeds until all of those proceeds have been spent for the school facilities projects described in the Bond Project List.

Annual Report to Board. Upon approval of this measure and the sale of any bonds approved, the Board shall take actions necessary to establish an account in which proceeds of the sale of bonds will be deposited. As long as any proceeds of the bonds remain unexpended, the Superintendent shall cause a report to be filed with the Board no later than January 1 of each year, commencing on the first January 1 after bonds have been issued and proceeds spent, stating (1) the amount of bond proceeds received and expended



in the past fiscal year, and (2) the status of any project funded or to be funded from bond proceeds. The report may be incorporated into the annual budget, annual financial report, or other appropriate routine report to the Board.

BOND PROJECT LIST

Bond proceeds will be expended to modernize, replace, renovate, expand, construct, acquire, equip, furnish and otherwise improve the classrooms and school facilities of the District.

Unless otherwise noted, the projects in the Bond Project List are authorized to be completed at each or any of the District's sites, as shall be approved by the Board of Trustees including the following sites:

Olive View Elementary - First Built 1954
Rancho Tehama Elementary - First Built 1994
West Street Elementary - First Built 1920

Woodson Elementary - First Built 2004
Maywood Davinci Middle - First Built 1972
Community Day School - First Built 1999

- Repair and replace leaky roofs
- Upgrade inadequate electrical systems
- Make health, safety and security improvements, including installing security fencing
- All Federal and State-mandated Americans with Disabilities Act (ADA) accessibility upgrades including site access, parking, staff and student restrooms, relocation of some existing electrical devices, drinking fountains, playground equipment, etc.
- Construct/modernize classrooms, restrooms and school facilities
- Replace temporary portables with permanent classrooms
- Modernize, renovate, repair, expand and/or upgrade the interior and/or exterior of existing classrooms, restrooms, and school facilities, including painting, tiles and flooring
- Upgrade deteriorating plumbing and sewer systems
- Upgrade inadequate electrical systems
- Replace outdated heating, ventilation and air-conditioning systems
- Upgrade playgrounds and play fields for school and community use
- Install energy efficient systems including "green" building projects and sustainable building practices to promote energy-efficiency (e.g., windows, solar, lighting, electrical systems panel, etc.).
- Upgrade school site parking, roadways, utilities and grounds
- Abate and remove hazardous materials identified prior or during construction
- Repair, replace and/or upgrade paved surfaces, turf, and other grounds to eliminate safety hazards
- Install shade structures and improve outdoor learning areas
- Necessary site acquisition and preparation/restoration in connection with new construction, renovation or remodeling, or installation or removal of relocatable classrooms, including ingress and egress,

052EM502



removing, replacing, or installing irrigation, utility lines (such as gas lines, water lines, electrical lines, sewer lines, and communication lines), trees and landscaping, relocating fire access roads, and acquiring any necessary easements, licenses, or rights of way to the property

The listed projects will be completed as needed. Each project is assumed to include its share of furniture, equipment, architectural, engineering, and similar planning costs, program/project management, staff training expenses and a customary contingency for unforeseen design and construction costs. In addition to the listed projects stated above, the list also includes the acquisition of a variety of instructional, maintenance and operational equipment, including the reduction or retirement of outstanding lease obligations and interim funding incurred to advance fund projects from the list; installation of signage and fencing; payment of the costs of preparation of all facility planning, facility studies, assessment reviews, facility master plan preparation and updates, environmental studies (including environmental investigation, remediation and monitoring), design and construction documentation, and temporary housing of dislocated District activities caused by construction projects. In addition to the projects listed above, the repair and renovation of each of the existing school facilities may include, but not be limited to, some or all of the following: renovation of student and staff restrooms; repair and replacement of heating and ventilation systems; upgrade of facilities for energy efficiencies; repair and replacement of worn-out and leaky roofs, windows, walls, doors and drinking fountains; installation wiring and electrical systems to safely accommodate computers, technology and other electrical devices and needs; upgrades or construction of support facilities, including administrative, physical education/athletic facilities and performing arts buildings and maintenance yards; repair and replacement of fire alarms, emergency communications and security systems; resurfacing or replacing of hard courts, turf and irrigation systems and campus landscaping and play fields; expand parking; install interior and exterior painting and floor covering; demolition; and construction of various forms of storage and support spaces, upgrade classrooms, bleachers, kitchens, repair, upgrade and install interior and exterior lighting systems; replace outdated security fences and security systems. The upgrading of technology infrastructure includes, but is not limited to, computers, LCD projectors, portable interface devices, servers, switches, routers, modules, sound projection systems, laser printers, digital white boards, document projectors, upgrade voice-over-IP, call manager and network security/firewall, wireless technology systems and other miscellaneous equipment and software. The allocation of bond proceeds will be affected by the District's receipt of State matching funds and the final costs of each project. In the absence of State matching funds, which the District will aggressively pursue to reduce the District's share of the costs of the projects, the District will not be able to complete some of the projects listed above. The budget for each project is an estimate and may be affected by factors beyond the District's control. Some projects throughout the District, such as gyms, fields and performing arts facilities, may be undertaken as joint use projects in cooperation with other local public or non-profit agencies. The final cost of each project will be determined as plans and construction documents are finalized, construction bids are received, construction contracts are awarded and projects are completed. Based on the final costs of each project, certain of the projects described above may be delayed or may not be completed. Demolition of existing facilities and reconstruction of facilities scheduled for repair and upgrade may occur, if the Board determines that such an approach would be more cost-effective in creating more enhanced and operationally efficient campuses. Necessary site preparation/restoration may occur in connection with new construction, renovation or remodeling, or installation or removal of relocatable classrooms, including ingress and egress, removing, replacing, or installing irrigation, utility lines, trees and landscaping, relocating fire access roads, and acquiring any necessary easements, licenses, or rights of way to the property. Proceeds of the bonds may be used to pay or reimburse the District for the cost of District staff when performing work on or necessary and incidental to bond projects. Bond proceeds shall only be expended for the specific purposes identified herein. The District shall create an account into which proceeds of the bonds shall be deposited and comply with the reporting requirements of Government Code § 53410.

052EM503



**IMPARTIAL ANALYSIS BY COUNTY COUNSEL
CORNING UNION ELEMENTARY SCHOOL DISTRICT
BOND MEASURE J**

This Measure J, known as the Corning Union Elementary School District Bond Election for November 5, 2024, would renew the tax rate of \$29.99 approved by voters in the 2002 election and extend the original tax rate that is set to expire in 2027. The proposal includes the issue and sale of bonds of up to \$13,700,000, issued by the Board of Trustees (the “Board”) of the Corning Union Elementary School District (the “District”), located in the County of Tehama. The bonds shall be issued and sold with the purpose of raising money to address specific facility needs, in compliance with Article XIII A, section 1(b)(3) of the State Constitution and California Education Code Section 15264 *et. seq.* The schools contained within the District include Olive View Elementary, Rancho Tehama Elementary, West Street Elementary, Woodson Elementary, Maywood Davinci Middle, and Community Day School.

The bonds will fund specific projects listed in the “Bond Project List,” including repairing roofs, heating ventilation and air-conditioning systems, electrical systems, sewer systems, replacing temporary portables with permanent classrooms, improving safety and security, installing energy efficient systems, and make Federal and State-mandated Americans with Disabilities Act accessibility updates.

Furthermore, the District will seek to levy, upon a 55% vote, an *ad valorem* tax upon those who reside within the District to repay those bonds. The *ad valorem* tax would levy approximately \$28.84 per \$100,000 of assessed valuation of property within the District, raising approximately \$809,000 annually.

In accordance with and pursuant to California Education Code Section 15278 *et seq.*, the Board shall establish an independent citizens’ oversight committee within 60 days of the date that the Board enters the election results on its minutes. The committee’s members will be selected in accordance with Section 15282 of the California Education Code. The committee will ensure that bond proceeds are expended only for projects listed in the “Bond Project List.”

A “yes” vote will approve the issuance and sale of bonds to be repaid by an *ad valorem* tax.

A “no” vote will not approve the issuance and sale of bonds to be repaid by an *ad valorem* tax.

This Impartial Analysis is hereby submitted to the Elections Officials in conformance with Section 9280 of the Elections Code of the State of California.

Dated: August 5, 2024

s/ Margaret Long
Margaret Long
Tehama County Counsel

The above statement is an impartial analysis of Measure J. If you desire a copy of the full text of the measure, please call the Tehama County Clerk at (530) 527-8190 and a copy will be mailed to you at no cost. You may also view the full text of Measure J at www.tehama.gov.



**TAX RATE STATEMENT
CORNING UNION ELEMENTARY SCHOOL DISTRICT
BOND MEASURE J**

TAX RATE STATEMENT

An election will be held in the Corning Union Elementary School District (the "District") on November 5, 2024, to authorize the sale of up to \$13.7 million in bonds of the District to finance school facilities as described in the measure. If such bonds are authorized and sold, principal and interest on the bonds will be payable only from the proceeds of ad valorem tax levies made upon the taxable property in the District. The following information is provided in compliance with Sections 9400-9404 of the Elections Code of the State of California. Such information is based upon the best estimates and projections presently available from official sources, upon experience within the District, and other demonstrable factors.

Approval of this measure will renew the originally approved tax rate of \$29.99 levied to repay bonds issued pursuant to the 2002 bond measure election approved by voters within Corning Union Elementary School District. This measure will not increase, but rather extend, the original tax rate that is set to expire in 2027.

Based upon the foregoing and projections of the District's assessed valuation, the following information is provided:

1. The best estimate of the average annual tax rate which would be required to be levied to fund this bond issue over the entire duration of the bond debt service, based on a projection of assessed valuations available at the time of filing of this statement, is \$28.84 per \$100,000 of assessed valuation. The final fiscal year in which the tax is anticipated to be collected is 2059-60.
2. The best estimate of the highest tax rate which would be required to be levied to fund this bond issue, based on a projection of assessed valuations available at the time of filing of this statement, is \$29.99 per \$100,000 of assessed valuation. It is estimated that such rate would be levied from fiscal years 2025-26 through 2056-57.
3. The best estimate of the total debt service, including the principal and interest, that would be required to be repaid if all the bonds are issued and sold is approximately \$27.6 million.

Voters should note the estimated tax rate is based on the assessed value (not market value) of taxable property on the County's official tax rolls. In addition, taxpayers eligible for a property tax exemption, such as the homeowner's exemption, will be taxed at a lower effective tax rate than described above. Property owners should consult their own property tax bills and tax advisors to determine their property's assessed value and any applicable tax exemptions.

The attention of all voters is directed to the fact that the foregoing information is based upon projections and estimates only, which amounts are not maximum amounts and are not binding upon the District. The actual debt service, tax rates and the years in which they will apply may vary from those used to provide the estimates set forth above, due to factors such as variations in the timing of bond sales, the par amount of bonds sold and market interest rates available at the time of each sale, actual assessed valuations over the term of the bonds, and other factors. The date and amount of bonds sold at any given time will be determined by the District based on the need for project funds and other considerations. The actual interest rates at which the bonds will be sold will depend on conditions in the bond market at the time of sale. Actual future assessed valuations will depend upon the amount and value of taxable property within the District as determined by the County Assessor in the annual assessment and the equalization process.

s/ Tiffany Dietz
Tiffany Dietz, Superintendent
Corning Union Elementary School District

052EM505



ARGUMENT IN FAVOR OF MEASURE J

Our elementary schools are some of the most important assets in our community and should be our number one priority. From higher achieving students to greater neighborhood safety and improved property values, quality schools make a difference. Although teachers and staff do a great job educating our children, many classrooms and buildings in the Coming Union Elementary School District need to be upgraded to provide students with the school facilities they need to succeed.

This is why we need your **YES vote on Measure J!** While our schools have been well maintained over the years, old classrooms and facilities must be improved. The average age of our schools in the District is over 50 years old. Measure J would renew the voter-approved tax rate from 2002 and improve the quality of education provided to local students by upgrading, renovating, and modernizing aging and outdated facilities.

Measure J, if passed, will provide funding to improve our neighborhood schools including:

- Making health, safety and security improvements
- Constructing and modernizing classrooms, restrooms, and school facilities
- Making handicapped accessibility improvements
- Upgrading inadequate electrical systems

Measure J makes financial sense and protects taxpayers.

- Measure J renews, but not increases, the same tax rate approved by voters over 20 years ago in 2002.
- By law, spending must be reviewed and annually audited by an independent citizens' oversight committee.
- All bond funds must be spent locally and **cannot be taken by the State.**
- Funds are required to be spent only on schools, not for administrator or teacher salaries.

Measure J upgrades and renovates outdated classrooms and school facilities, improves the education of local children, and maintains the quality of our community. That's something we can all support. Please join us and **VOTE YES ON MEASURE J!**

s/ Stephen Kelish
s/ Helen M. Pitkin
s/ Robert Hall
s/ Crystal Linnet-Weston
s/ Brenda L. Nelson





Language assistance

The following election materials will be translated in Spanish and available at all polling places:

- A copy of the ballot
- Voting Instructions
- State Voter Guide
- Voter Bill of Rights

All Tehama County polling places provide a Spanish facsimile ballot. A list of polling places and their locations can be found at <https://www.tehama.gov/government/departments/elections/>

Los siguientes materiales electorales se traducirán al español y estarán disponibles en todos los lugares de votación:

- una copia de la boleta electoral
- las instrucciones para votar
- la Guía estatal para votantes
- la Declaración de Derechos de los Votantes

Todos los lugares de votación del Condado de Tehama proporcionan un facsímil de la boleta en español. Se puede encontrar una lista de los lugares de votación y sus ubicaciones en <https://www.tehama.gov/government/departments/elections/>

Requesting a facsimile ballot

You may request a Spanish facsimile ballot be mailed or emailed to you by contacting the elections office via mail, telephone, or email.

Cómo solicitar una boleta facsímil

Usted puede solicitar que se le envíe una boleta facsímil en español por correo postal o por correo electrónico si se comunica con la Oficina de Elecciones por correo postal, teléfono o correo electrónico.

Voting assistance

As a voter, you may bring up to two individuals with you to your polling place to help you cast your ballot, as long as those individuals do not represent your employer or your union. Your polling place will have copies of the ballot in Spanish and may have poll workers ready to assist you who speak this language.

Asistencia para votar


Como votante, usted puede ir al lugar de votación acompañado por hasta dos personas para que le ayuden a emitir su boleta, siempre y cuando esas personas no representen ni a su empleador ni a su sindicato. Su lugar de votación tendrá copias de las boletas electorales en español y es posible que haya trabajadores electorales listos para ayudarle que hablen este idioma.


Background

California law requires the Secretary of State in January before the primary election for Governor to identify which precincts have 3% or more of the voting-age residents who are members of a single language minority and lack sufficient skills in English to vote without assistance.

For more information in English, please contact the elections office:

 elections@tehama.gov

 (530) 527-8190 or Toll Free (866) 289-5307

 (530) 527-1140



052ESLA1124

Accessible voting

At the polling place



To check polling place accessibility, look for the wheelchair symbol on the back cover of this pamphlet. If your site is accessible, below the symbol you will find the word YES.

In some polling places, temporary thresholds, ramps, signage, cones, and door props, are used to improve access to the facility.

Curbside voting

If your polling place is not accessible, you may vote on a paper ballot from a nearby accessible location, including a car. A poll worker will qualify you to vote and return the voted ballot to the polling place. Some polling locations have a call button that rings inside the polling place.

Accessible voting system

Each polling place in the county has an electronic accessible voting machine with:

- an audio option that reads the ballot to you
- a universal plug for personal assistance device
- large print (24 points)

Voting information

Audio versions of the information about state candidates and/or measures and local candidates and/or measures are available upon request. The recordings are available approximately four weeks before the election.

How to request assistance

To request any of these options for assistance with accessible voting:
Phone Tehama County: (530) 527-8190 or toll free (866) 289-5307

Disability Rights of California will operate a statewide Election Day hotline
7am to 8pm on Election Day: November 5, 2024
1-888-569-7955

You can now vote from home on a computer or smart phone using Remote Accessible Vote By Mail (RAVBM). RAVBM allows you to mark your ballot electronically then print it and submit it by fax: 530-527-1140 or by mail to P.O. Box 250 Red Bluff, CA 96080. Call our office for more information or go online to <https://www.tehama.gov/government/departments/elections/>



052ACCV1124



Be a poll worker!



Fill out the form, scan and Email to: elections@tehama.gov

Or Mail it to:

Tehama County Elections Department
PO Box 250
Red Bluff, CA 96080

Or call us at (530) 527-8190

Serve your community and make some extra money!

You can earn:

- \$118 as a Clerk
- \$133 as an Inspector
- Plus \$20 to \$40 for training

We need poll workers to serve in the polls for the November 5 election. To qualify as a poll worker you must either:

- a registered California voter,
- an exempt county worker,
- a lawful permanent resident of the United States, or a student in good standing attending a public or private secondary education institution, who is at least 16 years old at the time of the election. A separate application is required and can be found online at

<https://www.tehama.gov/government/departments/elections/>

I want to be a poll worker!

(check all that apply)

- | | |
|--|---|
| <input type="checkbox"/> I can work Tuesday, November 5, 2024. | <input type="checkbox"/> I have my own transportation. |
| <input type="checkbox"/> I am fluent in English. | <input type="checkbox"/> I am willing to travel to serve outside my neighborhood. |
| <input type="checkbox"/> I am also fluent in: _____ | |

Voter Information

Name: _____

Address where I live: _____

Phone: _____

Email: _____

Signature: _____

Date: _____



052BAPW1124

TEHAMA COUNTY POLLING LOCATIONS FOR ELECTION DAY

All polling locations will be open on Tuesday, November 5, 2024 from 7:00 am to 8:00 pm.

BOWMAN COMMUNITY CHURCH, 18335 BOWMAN RD.
BEND ELEMENTARY SCHOOL, 22270 BEND FERRY RD.
RED BLUFF COMMUNITY CENTER, 1500 S JACKSON ST.
FAIRGROUNDS TEHAMA ROOM, 650 ANTELOPE BLVD
SACRED HEART PARISH HALL, 2355 MONROE ST.
DEPARTMENT OF EDUCATION, 1135 LINCOLN ST.
EL CAMINO METHODIST CHURCH, 8345 HWY 99W
CORNING CITY HALL, 794 3RD ST.
MT OLIVE LUTHERAN CHURCH, 341 SOLANO ST.
CORNING VETERANS HALL, 1620 SOLANO ST.
LOS MOLINOS VETERANS HALL, 7980 SHERWOOD BLVD.
CHRIST COMMUNITY CHURCH VINA, 26370 5TH ST.

LAKE CALIFORNIA LAKE CLUB, 22431 RIO ALTO DR.
RIDGEWAY PARK, 19725 RIDGE RD.
DIBBLE CREEK FIRE STATION, 20230 HWY 36W
RED BLUFF MOOSE LODGE, 11745 HWY 99W
TEHAMA COUNTY ADMINISTRATION, 727 OAK ST.
FIRST UNITED METHODIST CHURCH, 525 DAVID AVE.
GERBER BIBLE FELLOWSHIP, 301 SAMSON AVE.
FIRST BAPTIST CHURCH, 506 COLUSA ST.
RANCHO TEHAMA REC HALL, 17605 PARK TERRACE
CONE METHODIST CHURCH, 11220 HWY 99E
MILL CREEK BAPTIST CHURCH, 25145 TAFT ST.
CAPAY JT. ELEM. SCHOOL, 7504 CUTTING AVE.

CHURCH OF JESUS CHRIST OF LATTER-DAY SAINTS, 545 BERRENDOS AVE.

TRINITY LANDMARK MISSIONARY BAPTIST CHURCH, 20910 HAMPTON RHODES DR.

TEHAMA COUNTY ELECTIONS OFFICE, 633 WASHINGTON ST. RM. 17, RED BLUFF

TEHAMA COUNTY VOTE-BY-MAIL BALLOT DROP-OFF LOCATIONS

IMPORTANT: Hours listed for each drop box are the business hours for the facility at the time of printing. These Drop Boxes are maintained by the Elections office and ballots will be retrieved at regular intervals throughout the dates listed below. **ALL** Drop Boxes will be locked and/or removed at 8:00PM on November 5, 2024.

October 7th thru November 5th

- | | | |
|--|---------------------------------|---|
| • Inside - SavMor | 590 Solano St., Corning | Hours: 7:00AM - 10:00PM Daily |
| • Inside - NuWay Market | 8049 Hwy 99E, Los Molinos | Hours 7:00AM - 9:00PM Daily |
| • Inside – Tehama County Library | 545 Diamond Ave., Red Bluff | Hours 1:00PM - 7:00PM Monday thru Friday |
| • Inside – Food Maxx | 94 Belle Mill Rd., Red Bluff | Hours 6:00AM - 12:00AM Daily |
| • Inside – Historic Courthouse Lobby | 633 Washington St., Room 17, RB | Hours 8:00AM - 5:00PM Monday thru Friday |
| • Outside – Tehama County Administration 727 Oak St., RB (parking lot) | | 24 Hours a day |



052IB1124

Sign up to track your ballot

Where's my ballot?

The Tehama County Election's office is now offering voters a new way to track and receive notifications on the status of their vote-by-mail ballot. Sign-up at WheresMyBallot.sos.ca.gov to receive automatic email, SMS (text), or voice call notifications about your ballot.



Voting by mail is EASY.

After marking your choices on your ballot, simply:

- Seal it.**
Secure your ballot inside the envelope from your county elections office.
 - Sign it.**
Make sure the signature on your ballot envelope matches the one on your CA driver license / state ID, or the one you provided when registering. Your county elections office will compare them to protect your vote.
 - Return it.**
By mail - Make sure your ballot is postmarked by **November 5, 2024.** No stamp required!
 - Track it.**
You can sign up at wheresmyballot.sos.ca.gov for alerts by text (SMS), email, or voice call on the status of your vote-by-mail ballot.
- OR
- In person** - Drop your ballot off at a secure drop box, polling place, or county elections office by **8pm on November 5, 2024.**

If you make a mistake on your ballot contact the Elections Office at (530) 527-8190 or toll free (866) 289-5307 for the procedure to obtain a replacement ballot.

POLLS OPEN AT 7 A.M. AND CLOSE AT 8 P.M.

052BCE298403